

**Guelph Twines Ltd.** provides electrical cable industry businesses across North America with high-quality plastic (polypropylene), paper, and flame-retardant cable fillers that meet exacting industry standards.



## Untwisted Plastic Cable Filler

Our untwisted plastic cable fillers fill empty spaces within a cable and provide structural support. They are made for easy handling during cable manufacturing. We use a specialized process to create a soft mesh-like pattern in our flat fibrillated fillers, allowing them to fill the vacant spaces between conductors inside the cable uniformly.



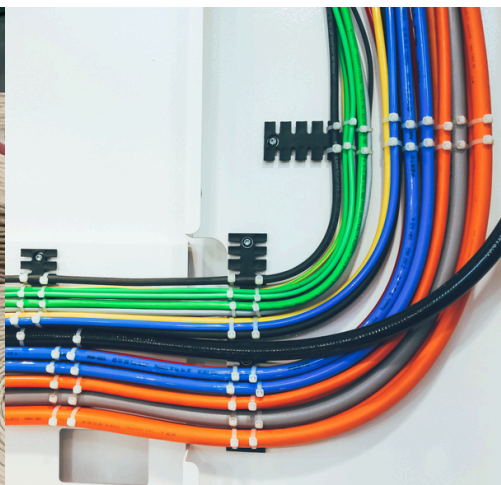
## Twisted Plastic Cable Filler

Used to construct cables to provide mechanical support and maintain the shape of the cable, the twisting in our plastic fillers helps reduce electromagnetic interference (EMI) and crosstalk between conductors. Where a round profile is best for filling a void (typically in larger cables), we manufacture our twisted plastic fillers by twisting an extruded tape to form a round length.



## Twisted Paper Cable Filler

Our twisted paper cable fillers maintain the geometry of an electrical cable by supporting and stabilizing it. We manufacture our twisted paper fillers by slitting large rolls of paper into varying widths, dipping the strips into wax, and twisting the strips around a reinforcement material (typically fiberglass) for a solid round filler.

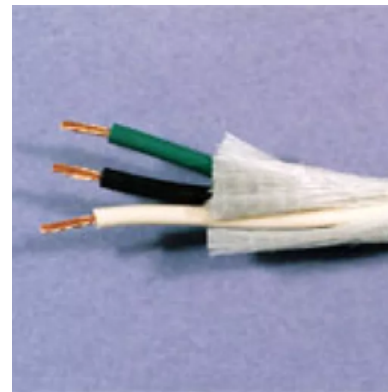


“

*What truly sets Guelph Twines apart is their commitment to customer care. I always got fully informed and satisfied with my ordering experience and have not received a non-conformance order from them. I highly recommend Guelph Twines to anyone seeking high-quality cable fillers and exceptional service.*

*Harsh Panchal, Supply Chain Planner  
Shawflex*

”



## Available Sizes



### Untwisted Plastic Cable Filler

Standard and flame-retardant available from .04" (1.2mm) to .180" (4.6mm). Put-up is on 12" traverse by 3.25" I.D. tubes.

### Twisted Plastic Cable Filler

Standard and flame-retardant available from .045" (1.2mm) to .350" (8.9mm). Put-up is on 10" traverse by 2" I.D. tubes. We can include plugs in the tube to bring the I.D. to 1".

### Twisted Paper Cable Filler

Standard and flame-retardant available from .055" (1.4mm) to .313" (8.0mm). Put-up is on 10" traverse by 2" I.D. tubes. We can include plugs in the tube to bring the I.D. to 1".



### Safety Assurance Through OI Testing

Recent ASTM D2863 testing demonstrated that our polymer flame-retardant cable fillers achieved an LOI of over 27%, exceeding the widely accepted benchmark of 25%. It reflects our commitment to polymer formulation and quality control, providing safer, more reliable filler solutions.



### Standard Sizes Kept in Stock for Fast Shipping

To help ensure your business operates smoothly, we stock some cable filler sizes, but most can be produced within a two-week lead time. If you need something manufactured to your specifications on a short lead time, give us a call.



**Phone:** (519) 821-9140  
**Toll Free:** 1-888-771-9140

info@guelphTwines.com  
guelphTwines.com

50 Crimea St.  
Guelph, Ontario, Canada  
N1H 6J6

**Hours:** Monday – Friday  
8:00 a.m. – 4:00 p.m. EST

Established in 1972 by industry visionaries from the Brantford Cordage Company, Guelph Twines Ltd. quickly became known for product quality and innovation by the comprehensive experience of its founders.

Today, Guelph Twines retains the same quality reputation and strength of experience as a third-generation family-owned business manufacturing twines, cable fillers, and other cordage products for many commercial, industrial, and agricultural businesses across North America.

In everything we do, our products reflect the experience of our cordage industry employees, dedicated to the values of product quality, reliability, innovation, fast order fulfillment, and exceptional customer service and satisfaction. We are here to deliver.



**Scan the QR code to view specs  
or place quick orders.**



### Untwisted Plastic Cable Filler (Standard & Flame-Retardant)

| Diameter (inches) | Code     | Name                                  | Feet / Pounds | Tube Size (inches) | Tube I.D. (inches) |
|-------------------|----------|---------------------------------------|---------------|--------------------|--------------------|
| .045"             | CF500048 | .045" / 5000 Denier Flat Cable Filler | 2,680         | 10" or 12"         | 3.25"              |
| .055"             | CF700048 | .055" / 7000 Denier Flat Cable Filler | 1,920         | 10" or 12"         | 3.25"              |
| .060"             | CF180048 | #1800 Flat Cable Filler               | 1,800         | 10" or 12"         | 3.25"              |
| .063"             | CF160048 | #1600 Flat Cable Filler               | 1,600         | 10" or 12"         | 3.25"              |
| .065"             | CF006548 | .065" Flat Cable Filler               | 1,600         | 10" or 12"         | 3.25"              |
| .075"             | CF007548 | .075" Flat Cable Filler               | 1,170         | 10" or 12"         | 3.25"              |
| .085"             | CF008518 | .085" Flat Cable Filler               | 900           | 10" or 12"         | 3.25"              |
| .095"             | CF009518 | .095" Flat Cable Filler               | 720           | 10" or 12"         | 3.25"              |
| .100"             | CF010018 | .100" Flat Cable Filler               | 600           | 10" or 12"         | 3.25"              |
| .110"             | CF011018 | .110" Flat Cable Filler               | 550           | 10" or 12"         | 3.25"              |
| .120"             | CF012018 | .120" Flat Cable Filler               | 465           | 10" or 12"         | 3.25"              |
| .125"             | CF012518 | .125" Flat Cable Filler               | 415           | 10" or 12"         | 3.25"              |
| .140"             | CF014018 | .140" Flat Cable Filler               | 350           | 10" or 12"         | 3.25"              |
| .150"             | CF015018 | .150" Flat Cable Filler               | 265           | 10" or 12"         | 3.25"              |
| .160"             | CF016018 | .160" Flat Cable Filler               | 240           | 10" or 12"         | 3.25"              |
| .180"             | CF018018 | .180" Flat Cable Filler               | 220           | 10" or 12"         | 3.25"              |

Colours Available: Silver (Standard), Yellow (Flame Retardant)

### Twisted Plastic Cable Filler (Standard & Flame-Retardant)

| Diameter (inches) | Code     | Name                       | Feet / Pounds | Twist Z (tpf) | Tube Size (inches) | Tube I.D. (inches) |
|-------------------|----------|----------------------------|---------------|---------------|--------------------|--------------------|
| .075"             | FT007560 | .075" Twisted Cable Filler | 1,050         | 10.0 "Z"      | 10"                | 1, 2, or 3.25"     |
| .085"             | FT008560 | .085" Twisted Cable Filler | 735           | 9.0 "Z"       | 10"                | 1, 2, or 3.25"     |
| .095"             | FT009560 | .095" Twisted Cable Filler | 630           | 9.0 "Z"       | 10"                | 1, 2, or 3.25"     |
| .100"             | FT010360 | .100" Twisted Cable Filler | 550           | 9.0 "Z"       | 10"                | 1, 2, or 3.25"     |
| .110"             | FT011060 | .110" Twisted Cable Filler | 467           | 9.0 "Z"       | 10"                | 1, 2, or 3.25"     |
| .125"             | FT012560 | .125" Twisted Cable Filler | 380           | 9.0 "Z"       | 10"                | 1, 2, or 3.25"     |
| .140"             | FT014048 | .140" Twisted Cable Filler | 307           | 6.0 "Z"       | 10"                | 1, 2, or 3.25"     |
| .160"             | FT016048 | .160" Twisted Cable Filler | 235           | 6.0 "Z"       | 10"                | 1, 2, or 3.25"     |
| .180"             | FT018048 | .180" Twisted Cable Filler | 185           | 6.0 "Z"       | 10"                | 1, 2, or 3.25"     |
| .200"             | FT020048 | .200" Twisted Cable Filler | 152           | 6.0 "Z"       | 10"                | 1, 2, or 3.25"     |
| .225"             | FT022548 | .225" Twisted Cable Filler | 124           | 6.0 "Z"       | 10"                | 1, 2, or 3.25"     |
| .240"             | FT024048 | .240" Twisted Cable Filler | 104           | 6.0 "Z"       | 10"                | 1, 2, or 3.25"     |
| .275"             | FT027548 | .275" Twisted Cable Filler | 92            | 4.5 "Z"       | 10"                | 1, 2, or 3.25"     |
| .300"             | FT030048 | .300" Twisted Cable Filler | 75            | 4.5 "Z"       | 10"                | 1, 2, or 3.25"     |
| .325"             | FT032548 | .325" Twisted Cable Filler | 66            | 4.5 "Z"       | 10"                | 1, 2, or 3.25"     |
| .350"             | FT035048 | .350" Twisted Cable Filler | 57            | 4.5 "Z"       | 10"                | 1, 2, or 3.25"     |

Colours Available: White (Standard), Yellow (Flame Retardant)

### Twisted Paper Cable Filler (Standard & Flame-Retardant)

| Diameter (inches) | Code     | Name                          | Feet / Pounds | Twist (tpf) | Tube Size (inches) | Tube I.D. (inches) |
|-------------------|----------|-------------------------------|---------------|-------------|--------------------|--------------------|
| .055"             | SJ0611CT | 635-110 SJ Paper Cable Filler | 800           | 9.0 "S"     | 10"                | 1" or 2"           |
| .071"             | SJ0960CT | 935-60 SJ Paper Cable Filler  | 660           | 9.0 "S"     | 10"                | 1" or 2"           |
| .078"             | PA0020CW | .078" Paper Cable Filler      | 521           | 9.0 "Z"     | 10"                | 1" or 2"           |
| .079"             | SJ1260CT | 1235-60 SJ Paper Cable Filler | 525           | 9.0 "S"     | 10"                | 1" or 2"           |
| .094"             | PA0024CW | .094" Paper Cable Filler      | 560           | 9.0 "Z"     | 10"                | 1" or 2"           |
| .109"             | PA0028CW | .109" Paper Cable Filler      | 460           | 9.0 "Z"     | 10"                | 1" or 2"           |
| .125"             | PA0032CW | .125" Paper Cable Filler      | 315           | 9.0 "Z"     | 10"                | 1" or 2"           |
| .140"             | PA0036CW | .140" Paper Cable Filler      | 285           | 9.0 "Z"     | 10"                | 1" or 2"           |
| .156"             | PA0040CW | .156" Paper Cable Filler      | 240           | 9.0 "Z"     | 10"                | 1" or 2"           |
| .175"             | PA0044CW | .175" Paper Cable Filler      | 183           | 9.0 "Z"     | 10"                | 1" or 2"           |
| .187"             | PA0048CW | .187" Paper Cable Filler      | 163           | 9.0 "Z"     | 10"                | 1" or 2"           |
| .218"             | PA005600 | .218" Paper Cable Filler      | 121           | 9.0 "Z"     | 10"                | 1" or 2"           |
| .295"             | PA007500 | .295" Paper Cable Filler      | 61            | 9.0 "Z"     | 10" or 14"         | 1" or 2"           |
| .313"             | PA008000 | .313" Paper Cable Filler      | 58            | 9.0 "Z"     | 10" or 14"         | 1" or 2"           |

Colour Available: Brown

### Standard Sizes Kept in Stock for Fast Shipping

We stock some cable filler sizes to help ensure your business operates smoothly, but most can be produced within a two-week lead time.

### Let Us Know What You Need

During office hours, someone is always available to answer your questions or provide you with product samples or documentation.